

PTO & LINKAGE CATALOGUE





Drive shaft identification



W Standard drive shaft		WWE80° Wide angle drive shaft			WWE50° Wide angle drive shaft			
Series	Cross Journal	Yoke	Profile Tubing	Guard	Guard Cone	Profile Tubing	Guard	Guard Cone
W 2000								
W 2100								
W 2102								
W 2200								
WWE WWZ 2250								
WWE WWZ 2280								
W 2300								
WWE WWZ 2350								
WWE WWZ 2380								
W 2400								
WWE WWZ 2450								
WWE WWZ 2480								
W 2500								
WWE WWZ 2580								
W 2600								
W 2700								

*GA = Coated surface for WWE/WWZ

**GE Special Outer Profile for Coated Inner Profile

***H = Hardened

Groove for guard ring		SQ/SD 05: D = 47	SQ/SD 15: D = 58	SQ/SD 25: D = 70	SQ/SD 25/1: D = 70	SQ/SD 35: D = 90
-----------------------	--	------------------	------------------	------------------	--------------------	------------------

Drive shaft identification types to be discontinued

(Spare parts only, not available as complete shaft)

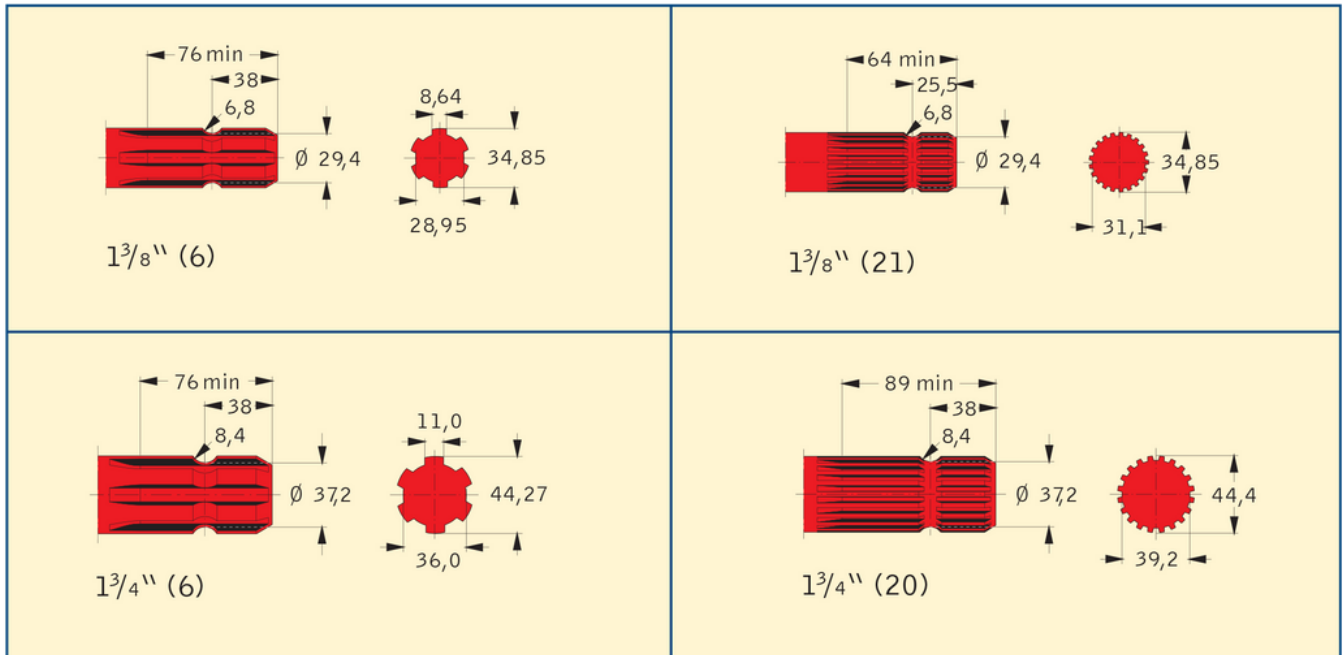
Series	Cross Journal	Yoke	Replaced by Series	Profile Tubing	PTO Guards	Guards Cones
W 2101			W 2102			
W I			W 2300			
W II			W 2400			
W 220			W 2400			
WWE WWZ 2270			WWE WWZ 2280			
WWE WWZ 2370			WWE WWZ 2380			
WWE WWZ 220			WWE WWZ 2480			

*GA = Coated Shaft for WWE/WWZ

GE Special Outer Profile for Cones Inner Profile

SC04/14/24/34 Has been Replaced by SC05/15/25/35

Tractor spare profile sizes:



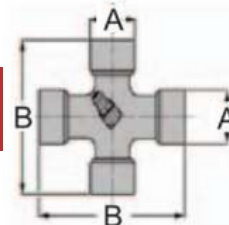
Repairs only original Walterscheid branded shafts



Contents

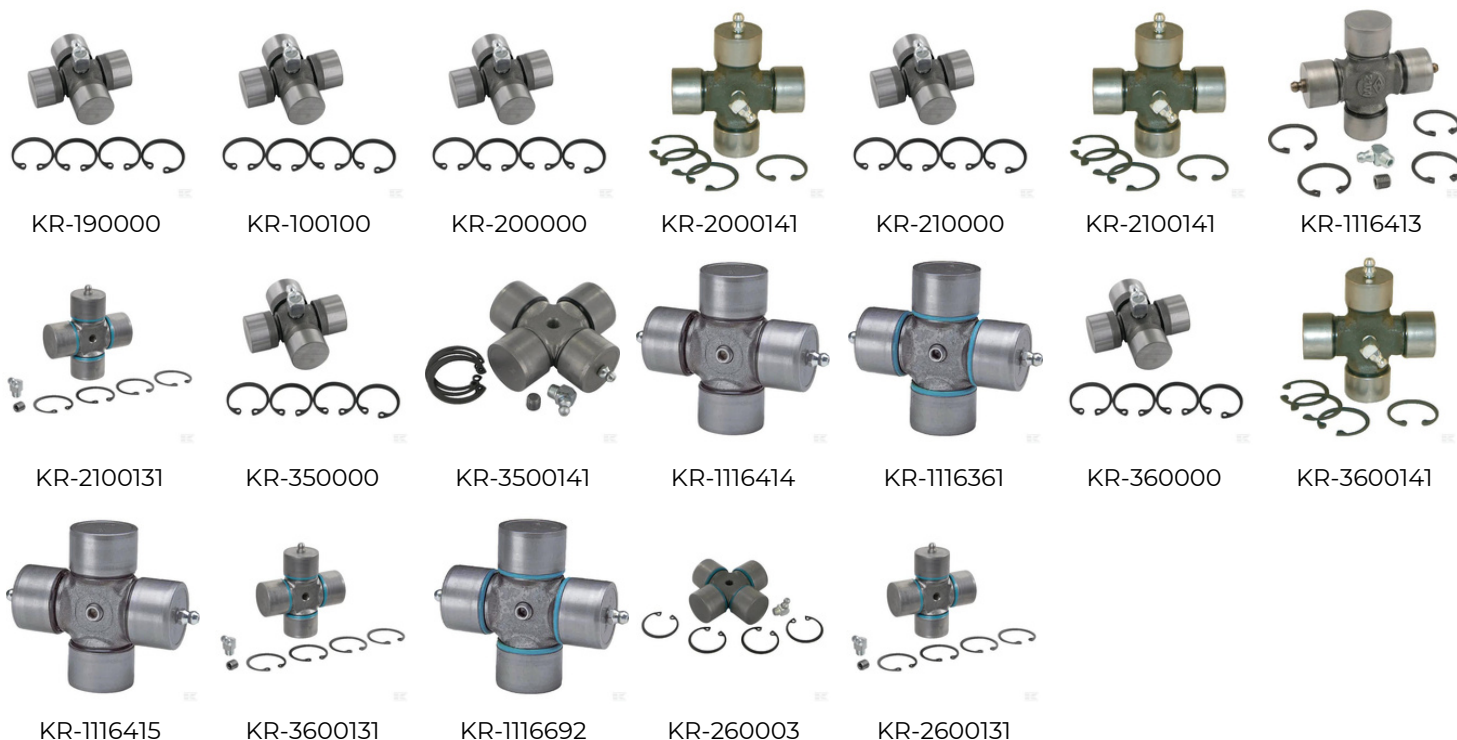
Universal Joint Cross Kits	5
Standard - Current Series	5
Standard - Old Series	5
Wide Angle - Current Series	6
Yokes	7
Quick Release Pin	7
Tube - Standard	8
Tube - Wide Angle	8
Yoke Repair Kits	9
Wide Angle Assemblies	10
Clutch	11
Friction Linings	11
Clutch Components	11
Cover Sets	12
Cover Assemblies - Standard	12
Cover Assemblies - Wide Angle	12
Guard Cones - Wide Angle	13
Guard Cones - PG Type	13
Guard Cones - Special	14
Guard Cones - Implement	14
Nylon Bearings & Reinforcing Collars	15
Accessories	16
Tractor PTO Safety Cover	16
Linkage	17
<u>Walterscheid</u>	
Lower Link Weld-On Hooks	17
Lower Link Hook Repair Kits	17
Lower Link Stabiliser Kits	17
<u>CBM</u>	
Lower Link Weld-On Hooks	18
Lower Link Hook Repair Kits	18
Lower Link Stabiliser Assemblies	19
Top Link Repair Kits	19

Universal Joint Cross Kits



Standard - Current Series

Part Number	Series	Notes	Drawing Number	A	B
KR-190000	2000	Standard "C" seal	19.00.00	18mm	47mm
KR-100100	2100	Standard "C" seal	10.01.00	22mm	55mm
KR-200000	2200	Standard "C" seal	20.00.00	24mm	61mm
KR-2000141	2200	1x cup lubrication & standard "C" seal	20.00.141	24mm	61mm
KR-210000	2300	Standard "C" seal	21.00.00	27mm	75mm
KR-2100141	2300	1x cup lubrication & standard "C" seal	21.00.141	27mm	75mm
KR-1116413	2300	2x cup lubrication & standard "C" seal	21.00.143	27mm	75mm
KR-2100131	2300	1x cup lubrication & improved "P" seal	21.00.131	27mm	75mm
KR-350000	2400	Standard "C" seal	35.00.00	32mm	76mm
KR-3500141	2400	1x cup lubrication & standard "C" seal	35.00.141	32mm	76mm
KR-1116414	2400	2x cup lubrication & standard "C" seal	35.00.143	32mm	76mm
KR-1116361	2400 / P400	2x cup lubrication & improved "P" seal	35.00.133	32mm	76mm
KR-360000	2500	Standard "C" seal	36.00.00	36mm	89mm
KR-3600141	2500	1x cup lubrication & standard "C" seal	36.00.141	36mm	89mm
KR-1116415	2500	2x cup lubrication & standard "C" seal	36.00.143	36mm	89mm
KR-3600131	2500 / P500	1x cup lubrication & improved "P" seal	36.00.131	36mm	89mm
KR-1116692	2500 / P500	2x cup lubrication & improved "P" seal	36.00.133	36mm	89mm
KR-260003	2600 / P600	Improved "P" seal	26.00.03	42mm	104mm
KR-2600131	2600 / P600	1x cup lubrication & improved "P" seal	26.00.131	42mm	104mm

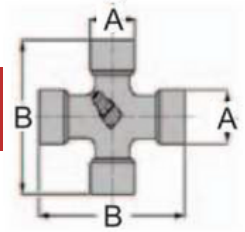


Standard - Old Series

Part Number	Series	Notes	Drawing Number	A	B
KR-110300	1	Standard "C" Seal	11.03.00	27mm	70mm
KR-220000	220	Standard "C" Seal	22.00.00	30mm	92mm



Universal Joint Cross Kits



Wide Angle - Current Series

Part Number	Series	Notes	Drawing Number	A	B
KR-200600	2280	Standard "C" seal	20.06.00	24mm / 22mm	61mm / 76mm
KR-210600	2380	Standard "C" seal	21.06.00	27mm / 24mm	75mm / 91mm
KR-2106141	2380	1x cup lubrication & standard "C" seal	21.06.141	27mm / 24mm	75mm / 91mm
KR-350600	2480	Standard "C" seal	35.06.00	32mm / 27mm	76mm / 94mm
KR-3506141	2480	1x cup lubrication & standard "C" seal	35.06.141	32mm / 27mm	76mm / 94mm
KR-1135076	2480	Central CV lubricator & standard "C" seal	35.06.144	32mm / 27mm	76mm / 94mm
KR-3506134	2480 / P480	1x cup lubrication, central CV lubricator & improved "P" seal	35.06.134	32mm / 27mm	76mm / 94mm
KR-360600	2580	Standard "C" seal	36.06.00	36mm / 32mm	89mm / 106mm
KR-3606141	2580	1x cup lubrication & standard "C" seal	36.06.141	36mm / 32mm	89mm / 106mm
KR-3606134	2580 / P580	1x cup lubrication, central CV lubricator & improved "P" seal	36.06.134	36mm / 32mm	89mm / 106mm



KR-200600



KR-210600



KR-2106141



KR-350600



KR-3506141



KR-1135076



KR-3506134



KR-360600



KR-3606141



KR-3606134

Yokes

Quick Release Pin

Part Number	Description	Series	Spline Size	Type	Drawing Number
KR-361000	Yoke Quick Disconnect	2500 / P500	1.3/8" - 6 Spline	Standard	36.10.00
KR-361002	Yoke Quick Disconnect	2500 / P500	1.3/8" - 21 Spline	Standard	36.10.02
KR-361800	Yoke Quick Disconnect	2500 / P500	1.3/4" - 6 Spline	Standard	36.18.00
KR-361802	Yoke Quick Disconnect	2500 / P500	1.3/4" - 20 Spline	Standard	36.18.02
KR-1147464	Yoke QR	2500 / P500	1.3/4" - 20 Spline	Standard - 70° Fold Up	36.30.110
KR-261000	Yoke QR	2600	1.3/8" - 6 Spline	Standard	26.10.00
KR-261002	Yoke QR	2600	1.3/8" - 21 Spline	Standard	26.10.02
KR-261800	Yoke Quick Disconnect	2600 / P600	1.3/4" - 6 Spline	Standard	26.18.00
KR-261802	Yoke QR	2600 / P600	1.3/4" - 20 Spline	Standard	26.18.02



KR-361000



KR-361002



KR-361800



KR-361802



KR-1147464



KR-261000



KR-261002



KR-261800



KR-261802

Yokes

Tube - Standard

Part Number	Description	Series	Tube Profile	Inboard/Outboard	Drawing Number
KR-3513100	Yoke Profile Tube	2400 / P400	S4	Inboard	35.13.100
KR-3513125	Yoke Tube	2400 / P400	S4	Inboard	35.13.125
KR-3514100	Yoke Profile Tube	2400 / P400	S5	Outboard	35.14.100
KR-3613100	Inner Tube Yoke	2500 / P500	S4	Inboard	36.13.100
KR-361321	Yoke Profile Tube	2500 / P500	S4	Inboard	36.13.21
KR-3626100	Yoke Tube	2500 / P500	S4 - 70° Fold Up	Inboard	36.26.100
KR-361421	Yoke Profile Tube	2500 / P500	S5	Outboard	36.14.21
KR-3614100	Yoke Profile Tube	2500 / P500	S5	Outboard	36.14.100
KR-2613100	Yoke Profile Tube	2600	S4	Inboard	26.13.100
KR-2614100	Yoke Profile Tube	2600	S5 (SD25)	Outboard	26.14.100
KR-261300	Yoke Tube	2600	S5 (SD35)	Inboard	26.13.00
KR-261400	Yoke Tube	2600	S6 (SD35)	Outboard	26.14.00
KR-351321	Yoke Profile Tube	P400	S4	Inboard	35.13.21
KR-351421	Yoke Profile Tube	P400	S5	Outboard	35.14.21
KR-261330	Yoke Tube	P600	S5	Inboard	26.13.30
KR-261430	Yoke Tube	P600	S6	Outboard	26.14.30



KR-3513100

KR-3513125

KR-3514100

KR-3613100

KR-361321

KR-3626100

KR-361421



KR-3614100

KR-2613100

KR-2614100

KR-261300

KR-261400

KR-351321

KR-351421



KR-261330

KR-261430

Tube - Wide Angle

Part Number	Description	Series	Tube Profile	Inboard/Outboard	Drawing Number
KR-3613312M	Yoke Profile Tube	P580	S4	Inboard	36.13.312



KR-3613312M

Yokes

Yoke Repair Kits

Part Number	Description	Series	Spline Size	Yoke/Collar Type	Drawing Number
KR-AG100	Agraset Quick Release Pin Kit	1-250	1.1/8" & 1.3/8" x 6 Spl	Quick Release Pin	Agraset 100
KR-AG101	Agraset Quick Release Pin Kit	2100 - 2600	1.1/8" & 1.3/8"	Quick Release Pin	Agraset 101
KR-AG102	Agraset Quick Release Pin Kit	2100 - 2600	1.3/4"	Quick Release Pin	Agraset 102
KR-AG122	Agraset Plastic Slide Collar Kit 1.3/8"	2100 - 2400	1.3/8"	QS Yoke - Black Plastic	Agraset 122
KR-AG123	Agraset Plastic Slide Collar Kit 1.3/8"	2500 - 2700	1.3/8"	QS Yoke - Black Plastic	Agraset 123
KR-AG124	Agraset Plastic Slide Collar Kit (Automatic) 1.3/4"	All Series	1.3/4"	QS Yoke - Black Plastic	Agraset 124
KR-AG118	Agraset Metal Slide Collar Kit 1.3/8"	2500 - 2700	1.3/8"	AS Yoke - Metal Collar	Agraset 118
KR-AG172	Agraset Plastic Slide Collar Kit 1.3/8"	All Series	1.3/8"	ASGE Yoke - Black Plastic	Agraset 172



KR-AG100



KR-AG101



KR-AG102



KR-AG122



KR-AG123



KR-AG124



KR-AG118



KR-AG172

Wide Angle Assemblies

Wide Angle Assemblies

Part Number	Description	Series	Notes	Drawing Number
KR-3583830351310	Wide Angle CV Joint 80°	2480	1.3/8 - 6 spl x 1bGA	WG2480-113315
KR-36831103613104	Wide Angle CV Joint 80°	2580	1.3/8 - 6 spl x S4GA	WG2580-113319



KR-3583830351310



KR-36831103613104

Clutch

Friction Linings

Part Number	Description	Inside Diameter	Outside Diameter	Thickness	Clutch	Drawing Number
KR-567313	Friction Disc	56mm	90mm	4.5mm	K94/1	56.73.13
KR-567308	Friction Disc	91mm	150mm	3mm	K90, K90/4, K91, K92, EK92, K92/4, EK92/4	56.73.08
KR-567321	Friction Disc	100mm	152mm	3mm	K900, FK90/4T	56.73.21
KR-567312	Friction Disc	100.5mm	157mm	3mm	K96, EK96, K96/4, EK96/4, FK96, EFK94, FK96/4, EFK96/4	56.73.12
KR-567311	Friction Disc	120mm	185mm	3mm	EK97/4	56.73.11



KR-567313



KR-567308



KR-567321



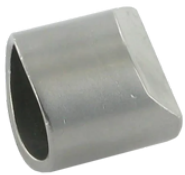
KR-567312



KR-567311

Clutch Components

Part Number	Description	Clutch	Notes	Drawing Number
KR-550103	Pawl	K31B - K36B, K33M - K34M,		55.01.03
KR-660104	Outer Spring	K31B - K36B, K33M - K34M,	Standard	66.01.04
KR-660105	Inner Spring	K31B - K36B, K33M - K34M,	Standard	66.01.05
KR-AG106	Agraset Radial Pin Kit (Standard Springs)	K31 - K36, K40,	Standard	Agraset 106
KR-1650618	Bush 35x39x35mm	K64/22&24, EK64/22&24,		16.50.618
KR-592301	K64/22-24 Cam 35mm	K64/22&24, EK64/22&24, K68/22, EK68/22, K68/24, EK68/24,		59.23.01
KR-651206	Clamp Cone 1.3/8"	Clutches fitted with Clamp Cone	1.3/8"	65.12.06
KR-651208	Clamp Cone 1.3/4"	Clutches fitted with Clamp Cone	1.3/4"	65.12.08
KR-AG108	Agraset Slide Collar Kit for Clutches 1.3/8"	Clutches fitted with Quick Release Collar	1.3/8"	Agraset 108



KR-550103



KR-660104



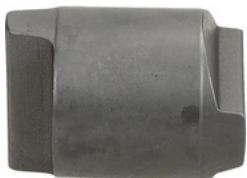
KR-660105



KR-AG106



KR-1650618



KR-592301



KR-651206



KR-651208



KR-AG108

Cover Sets

Cover Assemblies - Standard

Part Number	Description	Series	Notes	Drawing Number
KR-SD051000	Guard Complete	2000 / 2100 / 2200	Length = 1000mm	85.001 / 85.002
KR-SD051500	Guard Complete	2000 / 2100 / 2200	Length = 1500mm	85.001 / 85.002
KR-SD151000	Guard Complete	2200 / 2300	Length = 1000mm	85.104 / 85.105
KR-SD151500	Guard Complete	2200 / 2300	Length = 1500mm	85.104 / 85.105
KR-SD25550	Guard Complete	2300 / 2400 / 2500 / 2600	Length = 500mm	85.204 / 85.205
KR-SD251000	Guard Complete	2300 / 2400 / 2500 / 2600	Length = 1000mm	85.204 / 85.205
KR-SD251500	Guard Complete	2300 / 2400 / 2500 / 2600	Length = 1500mm	85.204 / 85.205
KR-SD351000	Guard Complete	2600 / 2700	Length = 1000mm	85.304 / 85.305



KR-SD051000



KR-SD051500



KR-SD151000



KR-SD151500



KR-SD25550



KR-SD251000



KR-SD251500



KR-SD351000

Cover Assemblies - Wide Angle

Part Number	Description	Series	Notes	Drawing Number
KR-SD151000WWZFLEX	Guard Complete SD15 Wide-Angle WWZ	2280 / 2380	Length = 1000mm	
KR-SD251000WWEFLEX	Guard Complete SD25 Wide-Angle WWE	2380 / 2480 / 2580	Length = 1000mm	
KR-SD251000WWZFLEX	Guard Complete SD25 Wide-Angle WWZ	2380 / 2480 / 2580	Length = 1000mm	
KR-PG201000WWEFLEX	Guard Complete Wide-Angle WWE	P480 / P580	Length = 1000mm	86.201-SPFH / 86.202-SPFH
KR-PG201000WWZFLEX	Guard Complete Wide-Angle WWZ	P480 / P580	Length = 1000mm	86.201-SPFH / 86.202-SPFH



KR-SD151000WWZFLEX



KR-SD251000WWEFLEX



KR-SD251000WWZFLEX



KR-PG201000WWEFLEX



KR-PG201000WWZFLEX

Cover Sets

Guard Cones - Wide Angle

Part Number	Description	Series	Notes	Drawing Number
KR-828312	Bearing Ring SD05/15	2280	SD05 / SD15 Cover	82.83.12
KR-828313	Bearing Ring SC15	2380	SD15 / SD25 Cover	82.83.13
KR-828314	Bearing Ring SC25	2480 / P480	SD25 Cover	82.83.14
KR-828315	Bearing Ring SD25	2580 / P580	SD25 Cover	82.83.15
KR-850100	Guard Cone SD15 L=164mm Flexo	2280	SD05 / SD15 Cover	85.01.00
KR-850101	Guard Cone SD15 L=186mm Flexo	2380	SD15 Cover	85.01.01
KR-850104	Guard Cone SD25 L=147mm Flexo	2380	SD25 Cover	85.01.04
KR-850002	Guard Cone SC25 L=188mm	2480 / P480	SD25 Cover	85.00.02
KR-850102	Guard Cone SD25 L=186mm Flexo	2480 / P480	SD25 Cover	85.01.02
KR-850103HE	Guard Cone SD25 L=203mm Flexo	2580 / P580	SD25 Cover	85.01.03
KR-851562	Flexo Element Complete SD15	2280 / 2380	SD15 Cover	85.15.62
KR-852562	Flexo Element Complete SD25	2380 / 2480 / 2580 / P480 / P580	SD25 Cover	85.25.62



KR-828312



KR-828313



KR-828314



KR-828315



KR-850100



KR-850101



KR-850104



KR-850002



KR-850102



KR-850103HE



KR-851562



KR-852562

Guard Cones - PG Type

Part Number	Description	Series	Notes	Drawing Number
KR-862000	Bearing Ring PG20	P300 / P400 / P500 / P480 / P580	PG20 Cover	86.20.00
KR-8283120	Bearing Ring PG25	P300 / P400 / P500 / P480 / P580	Converts SD25 to PG20	82.83.120 / 82.83.121
KR-863000	Bearing Ring PG30	P600 / P700 / P800	PG30 Cover	86.30.00
KR-828304	Bearing Ring SC25	P675	PG30 Cover	82.83.04
KR-852562	Flexo Element Complete SD25	P675	PG30 Cover	85.25.62



KR-862000



KR-8283120



KR-863000



KR-828304



KR-852562

Cover Sets

Guard Cones - Special

Part Number	Description	Series	Notes	Drawing Number
KR-8401101	Guard Cone	SD12	85mm ID x 315mm Long	84.00.100 / 84.01.101
KR-8401106	Guard Cone	SD12	85mm ID x 315mm Long	84.01.106
KR-8515500	Guard Cone	SD15	74mm ID x 290mm Long	85.15.500
KR-8525200	Guard Cone	SD12 / SD25	74mm ID x 312mm Long	85.25.200
KR-8525500	Guard Cone	SD25	85mm ID x 302mm Long	85.25.500
KR-8525602	Guard Cone	SD25	85mm ID x 286mm Long	85.25.602
KR-8526600	Guard Cone	SD25	85mm ID x 312mm Long	85.26.600
KR-8627603	Guard Cone	PG20	104mm ID x 352mm Long	86.27.603
KR-8628602	Guard Cone	PG20	104mm ID x 377mm Long	86.28.602



KR-8401101



KR-8401106



KR-8515500



KR-8525200



KR-8525500



KR-8525602



KR-8526600



KR-8627603



KR-8628602

Guard Cones - Implement

Part Number	Description	Series	Notes	Drawing Number
KR-820800	Guard Cone 110L		Length = 110mm	82.08
KR-820900	Guard Cone 150L		Length = 150mm	82.09



KR-820800



KR-820900

Cover Sets

Nylon Bearings & Reinforcing Collars

Part Number	Description	Series	Notes	Drawing Number
KR-830901	Bearing Ring SC05		SD05 Cover	83.09.01
KR-828306	Bearing Ring SC15		SD15 Cover	82.83.06
KR-828304	Bearing Ring SC25		SD25 & SD25/1 Cover	82.83.04
KR-828500	Support Ring SD14/24/15/25		SD15 / SD25 Cover	82.85.00
KR-828307	Bearing Ring SC35		SD35 Cover	82.83.07
KR-828312	Bearing Ring SD05/15	2280	SD05 / SD15 Cover	82.83.12
KR-828313	Bearing Ring SC15	2380	SD15 / SD25 Cover	82.83.13
KR-828314	Bearing Ring SC25	2480 / P480	SD25 Cover	82.83.14
KR-828315	Bearing Ring SD25	2580 / P580	SD25 Cover	82.83.15
KR-862000	Bearing Ring PG20	P300 / P400 / P500 / P480 / P580	PG20 Cover	86.20.00
KR-8283120	Bearing Ring PG25	P300 / P400 / P500 / P480 / P580	Converts SD25 to PG20	82.83.120 / 82.83.121
KR-863000	Bearing Ring PG30	P600 / P700 / P800	PG30 Cover	86.30.00
KR-828304	Bearing Ring SC25	P675	PG30 Cover	82.83.04



KR-830901



KR-828306



KR-828304



KR-828500



KR-828307



KR-828312



KR-828313



KR-828314



KR-828315



KR-862000



KR-8283120



KR-863000



KR-828304

Cover Sets

Accessories

Part Number	Description	Series	Notes	Drawing Number
KR-601500	Screw	For all Cover Assemblies		60.15.00
KR-823603	Guard Safety Chain 400mm	For all Cover Assemblies	Length = 400mm	82.36.03
KR-823608	Guard Safety Chain 600mm	For all Cover Assemblies	Length = 600mm	82.36.08



KR-601500



KR-823603



KR-823608

Tractor PTO Safety Cover

Part Number	Description	Spline Size	Notes
KR-1720	PTO Shield 1.3/8"	1.3/8"	Length = 93mm
KR-1710	PTO Shield 1.3/4"	1.3/4"	Length = 100mm



KR-1720



KR-1710

Linkage - Walterscheid

Lower Link Weld-On Hooks

Part Number	Description	Category	Rating (HP)	Drawing Number
KR-1208553	Lower Link Hook Weld On Type C1 Cat.2 Walterscheid	Cat 2	100HP (74kW)	200016 / 1208553
KR-1208556	Lower Link Hook Weld On Type C1 Cat.3 Walterscheid	Cat 3	225HP (165kW)	200020 / 1208556
KR-309746	Lower Link Hook Weld On Cat.4 Walterscheid	Cat 4	400HP (294kW)	309746 / 1208557



KR-1208553



KR-1208556



KR-309746

Lower Link Hook Repair Kits

Part Number	Description	Category	Drawing Number
KR-200001	Repair Kit Hook Cat 1/2 Walterscheid	Cat 1 / 2	200001 / 1202396
KR-200002KK	Repair Kit Hook Cat 3/3L Walterscheid	Cat 3 / 3L	200002 / 1202397
KR-1309751	Repair Kit Cat 4 Hook End Walterscheid	Cat 4	1309751 / 1208109



KR-200001



KR-200002KK



KR-1309751

Lower Link Stabiliser Kits

Part Number	Description	Category	Drawing Number
KR-201035	Agraset AG376 Stabiliser Repair Kit		AG 376 / 201035



KR-201035

Linkage - CBM

Lower Link Weld-On Hooks

Part Number	Description	Category	Rating (HP)	Notes
KR-080001814	Lower Link Hook Cat 1 CBM	Cat 1	70HP (50kW)	
KR-LA201000	Lower Link Hook Cat 2S CBM (Light)	Cat 2S	90HP (65kW)	Light Duty
KR-LA202000	Lower Link Hook Cat 2 CBM	Cat 2	150HP (110kW)	
KR-LA301000	Lower Link Hook Cat 3 CBM	Cat 3	280HP (206kW)	
KR-LA401000	Lower Link Hook Cat 4 CBM	Cat 4	400HP (294kW)	



KR-080001814



KR-LA201000



KR-LA202000



KR-LA301000



KR-LA401000

Lower Link Hook Repair Kits

Part Number	Description	Category	Rating (HP)	Notes
KR-080133006	Hook Repair Kit Cat 1 CBM (Standard)	Cat 1		Standard Duty
KR-080134006	Hook Repair Kit Cat 2S CBM (Light)	Cat 2S		Light Duty
KR-080135006	Hook Repair Kit Cat 2 CBM (Standard)	Cat 2		Standard Duty
KR-080136006	Hook Repair Kit Cat 2 CBM (AGCO/MF/CLAAS)	Cat 2		Agco/MF/Claas
KR-080137006	Hook Repair Kit Cat 3 CBM (Light/Standard)	Cat 3		Light & Standard Duty
KR-080138006	Hook Repair Kit Cat 3 CBM (AGCO/MF/CLAAS)	Cat 3		Agco/MF/Claas
KR-080139006	Hook Repair Kit Cat 4 CBM (Standard)	Cat 4		Standard Duty



KR-080133006



KR-080134006



KR-080135006



KR-080136006



KR-080137006



KR-080138006



KR-080139006

Linkage - CBM

Lower Link Stabiliser Assemblies

Part Number	Description	Notes	Suitable For	OEM Ref
KR-SLAA070HD	Stabiliser CBM	Automatic Locking		
KR-SLAB020	Stabiliser CBM	Automatic Locking	McCormick MC, MTX, XTX Series	711361A1,
KR-SL7	Stabiliser Bar CBM	Manual Locking	Landini 60, 80, ATLANTIS, ATLAS, BLIZZARD, GHIBLI Series	3532084M93,



KR-SLAA070HD

KR-SLAB020

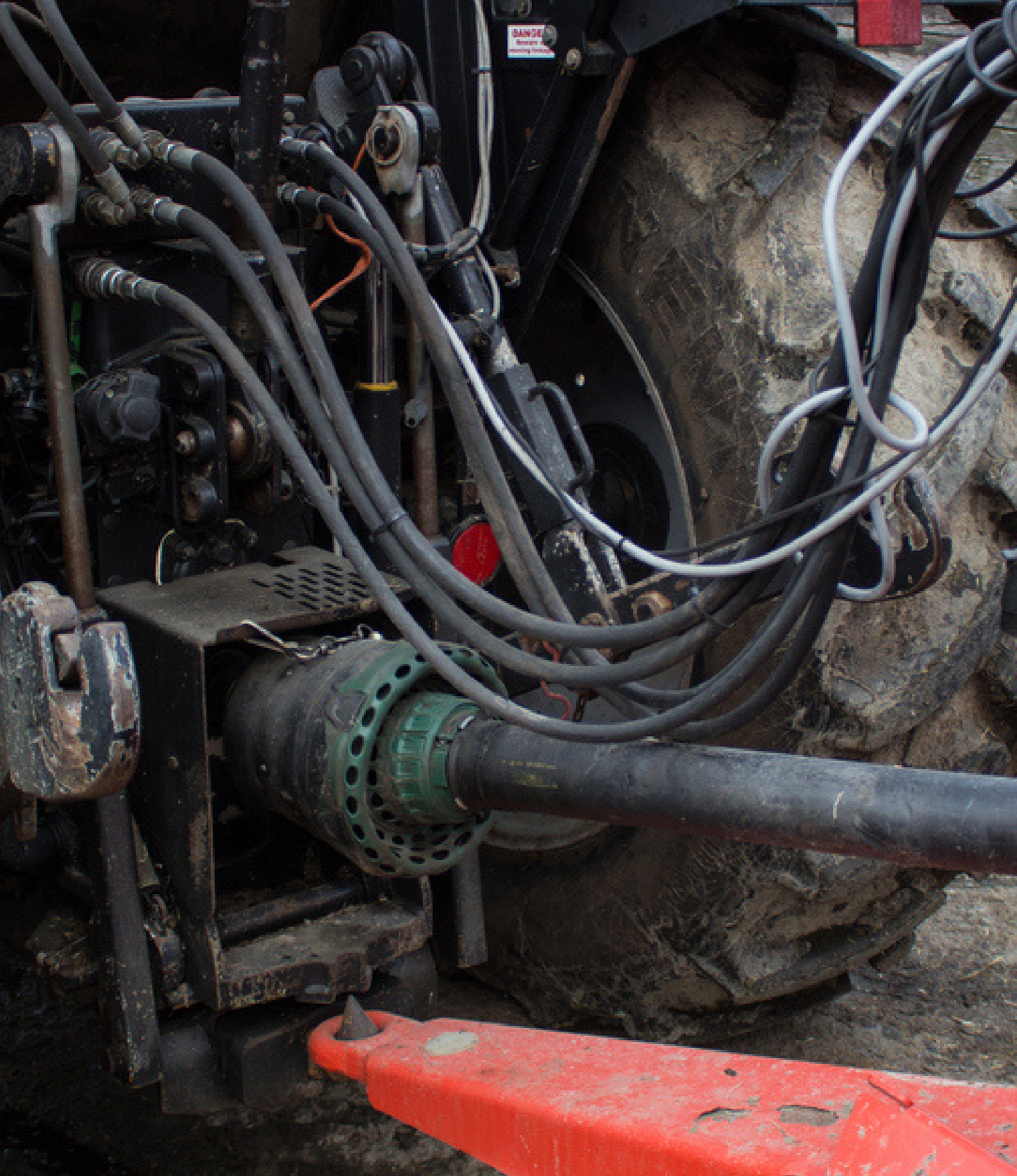
KR-SL7

Top Link Repair Kits

Part Number	Description	Category
KR-TL320002	Pin Cat 3/2 CBM	Cat 2 / 3



KR-TL320002



 **KRAMP**

WE KEEP FARMERS FARMING